

PHYTOCHEMICAL PROCESSING: THE NEXT EMERGING FIELD IN CHEMICAL ENGINEERING: ASPECTS AND OPPORTUNITIES

**Ramlan Abdul Aziz, Sivakumar Kumaresan,
Zarani Mat Taher and Dominic Foo Chwan Yee**

*Chemical Engineering Pilot Plant
Universiti Teknologi Malaysia
81310 UTM Skudai
Tel: +60-7- 5531571, Fax: +60-7-5569706
E-mail: ramlan@cepp.utm.my*

INTRODUCTION

Herbs have been used throughout human history as sources of food, medicines, beauty enhancers, and fragrances. The use of herbs as medicine has a long history starting in the Greek civilization in the West to the Arabic, Chinese, and Indian civilizations in the East.

The herbal related market include herbs used as food or food additives, cosmetic ingredients, and herbal medicines. The current estimates for this market ranges between USD 40- 100 billion with an average annual growth rate of 15 to 20 %. Box 1 lists out several common forms of products.

A significant portion of this market are medicinal products from plant sources. Many allopathic medicines, which are produced synthetically, are also derived from plants such as quinine for malaria and quinidine for hearth arrhythmia from *Cinchona* spp, and digoxin for heart failure from *Digitalis* spp. About 25% of drugs prescribed worldwide come from plants, 121 such active compounds being in current use.

There is a growing trend of people moving from synthetic allopathic drugs to herbal cures. Among reasons for this shift include a preference for a wellness oriented self administered healthcare, the prevalence of chronic illnesses that cannot be cured by conventional drugs, and the high pace of life which induces higher stress and reduced free time.

In view of the potential size of the herbal based market, and herbal medicines in particular, it is important that Malaysia build an industry based on its natural herbal heritage. In the past much of the chemical industry was based on agricultural and animal material before the advent of petrochemicals. Many dyes, industrial chemicals, solvents, food additives etc were derived from these sources. Much work needs to be done to develop both product and processes for this industry.

Box 1: Common Herbal Products

PHYTOCHEMICAL – comes from the Greek word “Phyto” for plant. It refers to every naturally occurring chemical presents in plants. Plant are also the source many modern pharmaceutical (drugs). It is estimated that approximately one quarter drugs contain plant extract or active ingredients obtained from plant substances.

COSMECEUTICAL – is the term used to describe cosmetic containing ingredients that are bioactive, exerting effects on people. It is a blend of cosmetic and pharmaceutical which has appeared only in the nineties. Examples are anti-wrinkles creams, baldness treatments, moisturizers and sunscreens.

NUTRACEUTICAL – can be any substance that may be considered a food or part of a food that provide medical and health benefits, including the prevention and treatment of disease. Under this broad definition, nutraceutical might be isolated nutrients, dietary supplements or diets, processed foods, herbal products or genetically engineered “designer foods”.

OLEORESIN – are pure extractives of a spice or herb which contain concentrated natural liquid flavourings that contain both volatile and non-volatile flavour components.

ESSENTIAL OILS – volatile part of the plant that are largely responsible for its characteristic aroma. It can be applied to enhance health through its holistic effects on the body.

Current Global Trends

The global herbal market is valued at USD 70 billion for nutraceuticals and USD 20 billion for phytomedicines with an average annual growth rate between 15 to 20%.

Among driving forces for the growth of the global herbal industry include:

- Population demographics – a large portion of the developed nations are older – thus higher demand for anti aging and chronic disease cures
- Increasing focus on health vs. disease
- Drive towards self care and self diagnosis

A key driving force is the growing knowledge of consumers about traditional medicines. Many consumers have come to realise that effective herbal cures are the results of thousands of years of herbal healing framework development through trial and error, observation, and study. Also, there have been some high profile natural based cures such as Taxol for Breast Cancer and the Bintangor plant for AIDS.

In several countries, traditional healing methods have been incorporated into the modern health system. In Germany, over 80% of doctors prescribe a combination of modern medicines as well as herbs. In Japan, doctor prescribed phytomedicines can be claimed under national health insurance.

A key sub area of the herbal industry that is growing rapidly is the nutraceutical area. Consumers are showing a growing preference to consume their nutritional needs through their food rather than in a medicinal form such as capsules or tables. Among key items are fortified foods such as grains fortified with calcium or vegetables fortified with herbal extracts such as Gingko Biloba.

Malaysian Scenario

Malaysia is well positioned to be a key global player in the herbal medicine industry with its rich biological heritage, cultural background, and trade links.

Malaysia is listed as the 12th most bio-diverse nation in the world and 4th in Asia with over 15,000 flowering plants and over 3000 species of medicinal plants. Of the 3000 listed medicinal plants, only about 50 are used and even less are being researched scientifically for their medicinal properties, and many more have yet to be catalogued extensively through ethno botanical research.

Malaysia is also home to 3 major races, Malays, Chinese and Indians, as well as a host of diverse indigenous groups, who all have a rich tradition and knowledge of herbal use for health and healing.

At present, the Malaysian market for herbal and natural products has been estimated to be worth RM4.55 billion of which 90% of the raw material used was imported. The key driving forces in the Malaysian domestic market are the changes in lifestyle, the growing emphasis on health, and the growing cost of synthetic medicines.

The Malaysian government has been strongly supportive of the development of a Malaysian herbal industry. The National Agricultural Policy (1998-2010) identifies a product and export oriented policy as a thrust area. Herbal cultivation easily falls under this category. In addition, the Ministry of Health has released a Traditional/Complimentary Medicine (TCM) Policy in 2000 with the emphasis of 'rational use', the philosophy that traditional as well as modern medicines can be used concurrently.

On the industrial front, the Malaysian Herbal Corporation (MHC) in was formed under the auspices of the Malaysian Industry – Government Group for High Technology (MIGHT) in 1998 to coordinate the efforts between the private and public sector to build up the local herbal industry. It is specifically aimed to address critical issues along the herbal value chain as shown in Figure 1 to allow the industry to become globally competitive.

The Prime Minister, Datuk Dr. Mahathir Mohammad, recognises the importance of agriculture. In his recent launching of BioValley, he emphasized the need to return to and enlarge Malaysia's agricultural efforts, as Malaysia is rich in agricultural resources which can be turned into biotechnological riches. Herbal and phytochemical based agriculture are examples of such endeavours.

The Minister for Rural Development has identified the herbal industry as one of the upcoming industries to be supported by the government. One key reason is that will close the economic gap between the rural and urban areas through increased economic development.

The Malaysian government has also given financial support to research work related to herbs in term of Intensified Research in Priority Areas (IRPA) grants, the focus areas by the National Biotechnology Directorate, as well as other grant schemes. Areas of focus include ethnobotany, phytochemicals, processing, cultivation studies, biochemistry, pharmacology, and clinical trials.

Several policies, laws, and regulations related to herbs include

- Good Manufacturing Practice codes
- Clinical trial codes

Strategic analysis Core Competencies

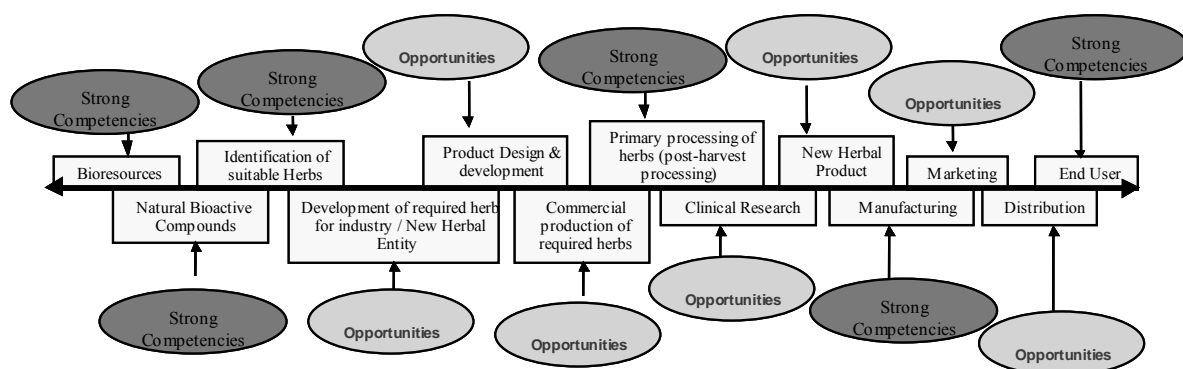


Figure 1: MIGHT Analysis of Herbal Industry in Malaysia

Another issue that the Malaysian Government will need to address is the issue of Intellectual Property Rights with regards to herbal value in terms of indigenous species and traditional usage. The recent cases involving tumeric and neem where India successfully challenged the patents filed by the US highlights the danger in not taking active steps to protect local knowledge and plants.

A CROSS SECTION OF COMMERCIALY VIABLE MALAYSIAN HERBS

Tongkat Ali, *Eurycoma longifolia*, is a traditional Malay and Orang Asli herb used as an Aphrodisiac, General tonic, Anti-Malarial, and Anti-pyretic. Scientifically it has also been found to have anti-tumour and anti oxidant properties. The decoction of the roots is taken orally. It has been biochemically shown to increase testosterone production as well as overcome impotence. At present one of the largest commercial producers are Phytes Biotek, the country's first Malaysian Venture Capital (MAVCAP) investment in which the Chemical Engineering Pilot Plant (CEPP) played an important role in jointly developing the Tongkat Ali water extract processing technology.



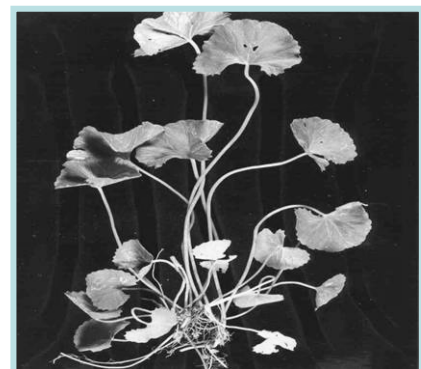
Kacip Fatimah, *Labisia pumila*, is a herb used in the treatment of post partum mothers, gonorrhoea, rheumatism, pile, and bone diseases. It is currently being researched for its estrogenic and androgenic properties. If found to be viable, it will represent a good herbal medicine for hormone replacement therapy or estrogen related therapy. CEPP together with Universiti Malaysia Sabah is involved in preparing water extracts for clinical studies for a national top down research project.

Hempedu Bumi, *Andrographis paniculata*, is used for Anti-pyretic, Anti-fertility, Treatment of appetite loss, Anti-diabetes, Anti-hypertensive, and Skin condition – eruption and scabies. It has a very bitter property and is a strong liver tonic. Its anti diabetic and anti hypertensive properties have been studied to produce herbal medicines at Universiti Sains Malaysia. Its leaves are boiled and taken as an oral decoction.



Misai Kucing, *Orthosiphon stamineus*, can be used for kidney related and joint ailments such as gall stones, diabetes, arthritis, rheumatism, and gout. It has been proven to remove uric acid through its diuretic activity which is the main path for its therapeutic activity.

Pegaga, *Centella asiatica*, is a long used Asian herb mentioned in both the Chinese Materia Medica and Ayurvedic texts for its anti aging and overall beauty enhancement properties. It works by enhancing the connective tissue activity in the skin. It is cultivated on a large scale by French Cosmetic companies as an ingredient in cosmetic products. Pegaga is also one of the plants studied under the Malaysia-MIT Biotechnology Partnership Programme apart from Tongkat Ali.



FROM PLANTING TO PRODUCT: THE HERBAL VALUE CHAIN

There are several major steps in herbal product manufacturing starting from herbal crop planting to herbal product manufacturing and marketing.

Traditionally herbs have been collected for use from wild areas. For large scale production this presents an infeasible solution due to the lack of reliable and abundant supply. Continued harvesting

of wild sources will lead to species endangerment and extinction. Agricultural cropping of herbs as specialty crops can ensure high quality herbal products by:

- Correct herb identification
- Adequate herb supply
- Optimal herbal planting and harvesting for phytochemical

Correct herb identification is essential as many herbal species come in many varieties which have similar appearances as well as similar usage in traditional medicine. An example of this is *Phyllanthus amarus* (Dukung Anak) and *Phyllanthus nururi* both of which has liver healing properties. However, both varieties have different phytochemicals as well as different phytochemical distribution profiles.

At present countries like France and Germany have pioneered and mastered herbal cultivation for phytochemical products for plants such as Gingko Biloba and Gotu Kola (i.e. Pegaga). The plants are cultivated in farms of over many thousands of acres and cultivated and harvested over carefully planned conditions to prepare adequate supply to meet demand. In fact, Gingko, which is commercially cultivated, is purchased annually at USD 500 million sales in France and Germany.

Good Agricultural Practice is a code of practice focused on optimal use of agricultural resources coupled with environmental concerns which include

1. Guidelines on handling fertilizer and pesticides
2. Guidelines on farming waste
3. Guidelines on storage of agricultural chemicals
4. Guidelines on handling harvested material

Cultivation and harvesting are critical aspects of herbal production, as unlike bulk crops where the quantity of products can be directly observed, phytochemicals can only be determined through chemical analysis, especially as herbal extract yields are in the 2-5% range. It is therefore critical to have guidelines on how to cultivate and when to harvest to ensure maximum phytochemical concentration. An example of how critical harvesting time is St Johns Wort where the active ingredient can only be found in the hypercium which comes out at a specific time in the day. It is also important to use organic farming methods as heavy metals from pesticides and fertilizers can be extracted with the phytochemical extracts during processing.

In addition to better cultivation and harvesting, both crop rotation and intercropping are methods to better utilise available agricultural land. Crop rotation, where crops are changed year by year in a planned sequence, is a method of ensuring optimal soil usage and cultivation. Intercropping where more than one crop is cultivated duplicates nature's diversity where one plant's waste is another's feed. Both Crop rotation and intercropping can be seen at Taman Herba Melaka as below in Figure 2.



Figure 2: Intercropping of Tongkat Ali with jati, pineapple, and kayu manis.

Once the herb is harvested, quick **preprocessing and correct storage** is required. Preprocessing involves reducing the size of the herb through chopping and grinding to prepare for processing while good storage method ensures that the active phytochemicals are maintained before processing.

Processing is a critical aspect of herbal production, especially due to the low yield of extracts. Processing methods are usually based on traditional methods such as high pressure water extraction for herbs which are traditionally boiled as decoctions. New innovative methods such as Supercritical Fluid Extraction (SFE) need to be developed to produce herbal products of higher yield, lower operating costs, and faster production times. Packaging and sale follows processing. Herbal products can be sold in a variety of forms such as capsules, tablets, tea bags, extracts and essential oils.

Good Manufacturing Practice (GMP) is a code of practice used by the medical and health related industries including the pharmaceutical industry in an effort to maintain the highest standards of quality in the development, manufacture and control of medicinal products. In Malaysia, the GMP certification is issued by National Pharmaceutical Control Bureau (NPCB), which is issued as an annual Manufacturing License to which it can be revoked at any time if the facilities are found not to meet the standards of GMP. Herbal medicine products can only be sold by manufacturers who utilize GMP as it ensures that the herbal product safety and purity. In addition, manufacturers intending to export their products must ensure that their target markets accept their GMP practices.

A key issue in manufacturing herbal products and medicines is standardization. **Standardization** is the process of producing herbal extracts or phytochemicals in which product potency is guaranteed through consistency in active compound content level. This process requires high knowledge in phytochemical analysis and process technology to ensure the quality assurance required. Figure 3 shows the increase of value in herbal products as increased processing and standardization is carried out.

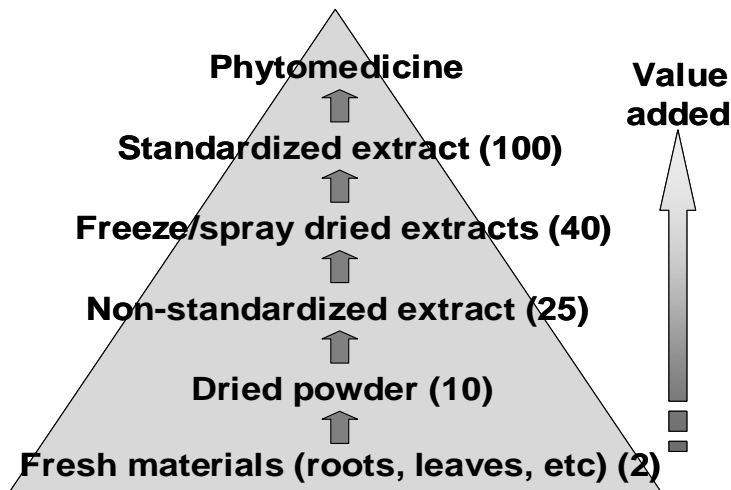


Figure 3: Market Value of Herbal Preparations

Herbal products can be sold in either whole herbal extracts or pure phytochemicals as shown in Figure 4 and Figure 5. In general it has been found that whole herbal extracts are more effective than isolated phytochemicals due to a synergistic effect between the phytochemical components. Therefore in standardisation, it is important to assure that the herbal phytochemical profile is maintained.

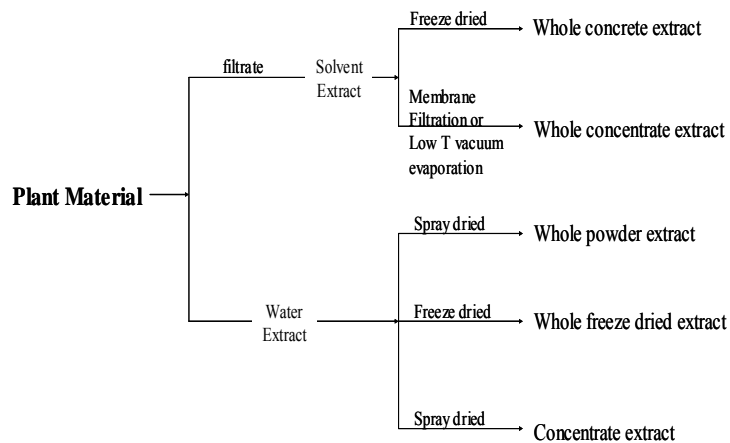


Figure 4: Herbal Approach

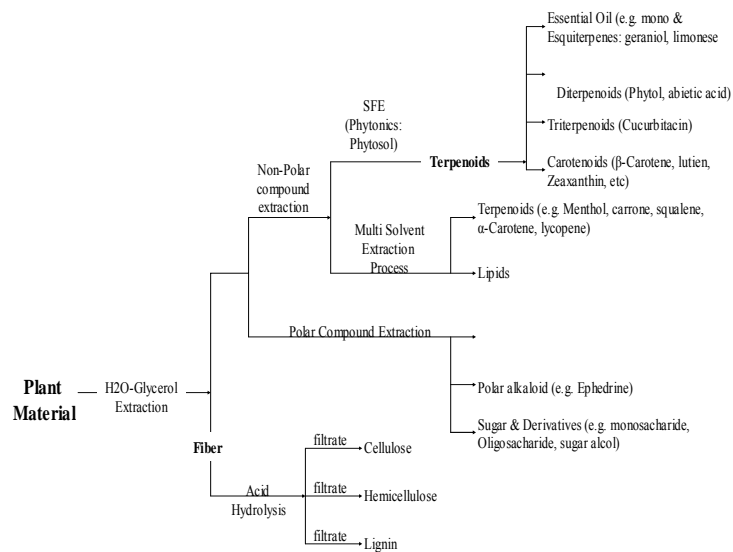


Figure 5: Phytochemical Approach

THE ROLE OF CHEMICAL ENGINEERS IN THE PHYTOCHEMICAL INDUSTRY

Knowledge is the key catalyst in enabling Malaysia to become a global herbal producer. At present moment there is a lack of knowledge in 3 major areas:- Agricultural practice, pharmacology, and process technology. There is also a need to train more knowledge workers in these relevant fields.

Apart from agricultural and pharmacological knowledge, process knowledge also needs to be addressed. Phytochemical processing is a relatively new field of which chemical engineers and food technologists have been involved with only recently. As standardization is an important aspect of increasing value of phytomedicines, processing technology innovation as well as process operating information is required for local herbs. Important areas needed in research include the development of environmentally friendly processes, the application of new and novel processing methods to local herbs, and the enhancement of existing process technology.

In addition, as the overall phytochemical yield of herbal extracts are between 2-5 %, it is important to develop expertise in optimising the process as process profitability can be increased through:

- Reduction of utilities usage
- Increase in phytochemical yield

- Reduction of extraction solvents
- Reduction of processing time

Many processes within the phytochemical industry are similar or identical to unit operations within chemical engineering. Table 1 shows the similarities in terms on unit operations and phytochemical processing methods between traditional chemical engineering and phytochemical processing.

Table 1: Phytochemical processing and Chemical Engineering similarities

Unit Operation	Chemical Engineering	Phytochemical Processing
Mass Transfer	Distillation Solid Liquid Extraction Supercritical Fluid Extraction	Essential Oil extraction Herbal leaching Supercritical Fluid Extraction
Process Design	Model based design Process synthesis and design Optimisation	Model based design Process synthesis and design Optimisation
Bioprocess Engineering	Downstream processing Scale up	Phytochemical approach Scale up
Powder Technology	Mixing	Capsule preparation
Instrumentation and Measurement	On line analysis Process Control	Phytochemical analysis Process Control
Environmental Engineering	Pollution prevention through substitution Biomass conversion Waste reduction	Solvent design and substitution Biomass conversion Waste reduction

From Table 1, it can be seen that many areas of chemical engineering would be applicable to the phytochemical industry. In terms of basic knowledge Chemical engineers will need to focus on acquiring more knowledge on

- Organic Chemistry – Natural products chemistry in particular
- Analytical Methods – such as HPLC, LC-MS, NMR
- Separation Technology – such as SFE, natural product isolation and purification

As much research in phytochemical processing has been done by chemists in terms of chemical isolation and pharmacists in terms of bioactivity, there is a need for basic chemical engineering oriented research to be done. There are almost no data available on the physical and chemical properties of the phytochemicals or herbal medium to be processed, hence, process design and optimisation is currently a trial and error procedure. There is also a strong need to build up scale up knowledge, either through a theoretical basis or pilot plant experiments, as frequently only laboratory data is available.

Chemical Engineers will also need to work closely with other professionals in this new field with a new jargon and orientation. It is a cross disciplinary field that will involve

- Phytochemists
- Food Technologists
- Pharmacists

CEPP FOCUS ON PHYTOCHEMICAL PROCESSING

The Chemical Engineering Pilot Plant was set up in 1998 with CEPP was formed for the following objectives:

- To bridge the funding gap between research findings and commercialised products
- To assist Malaysia in building indigenous products and processes
- To assist Malaysia in building up indigenous expertise

Phytochemical processing were chosen as a focus area in the Fine Chemical section at the Pilot Plant. The primary emphasis in this area is on

- Improving processing techniques for local herbal products
- Developing products for market testing as well as small scale production

Several major equipment used at for phytochemical processing include:

- 300 litre Extraction vessel
- Low Pressure Super Critical Extractor
- Hydro distillation unit
- Spray Dryer
- Freeze Dryer
- Centrifuge
- Homogenizer
- Turbo Extractor Distiller

As the analysis of the raw material, herbal extract, pure phytochemical and final products are critical to quality assurance and process development, several analytical equipment are available at CEPP which comprise of:

- High Performance Liquid Chromatograph (HPLC)
- Liquid Chromatography – Mass Spectrometer
- Spectrophotometer

Significant CEPP Research Projects and Industrial Collaborations

In the short time since it's formation in 1998, CEPP has been involved in several projects which include:

1. MHCP production from Cinnamon
2. Phytochemical production from *Zingiber Zerumbet* and *Curcuma Xanthorrhizza*
3. Production of Oleoresins and Essential Oils from *Zingiber officinale*
4. Tongkat Ali production process development
5. Aromatherapy product development
6. Vitamin E product formulation

A key concept in many of CEPP's projects is the biorefinery concept where raw plant material is totally fractionated and converted into a spectrum of valuable products. Cinnamon (kayu manis), a common spice used in Asian cooking, is one such plant where this concept can be applied. Among products from Cinnamon include essential oils, oleoresins, extracts, and purified phytochemicals. One high value product from Cinnamon is **Methyl Hydroxy Chalcone Polymer (MHCP)**, a phytochemical with scientifically proven anti diabetic properties. MHCP has been found to increase cellular glucose oxidation by a factor of up to 20 fold, improve the function of insulin receptors in cells, and has a strong anti-oxidant effect.

An IRPA funded project entitled 'Production of Speciality Phytochemicals from *Cinnamomum Zeylanicum*' CEPP R&D Manager, together with the UTM Science faculty as well as industry collaborators started in 2002. Its primary aim was to develop an environmentally safe and

economically viable process to produce standardised Cinnamon extracts and purified MHCP. These extracts would be then used as functional food additives or phytochemicals.

Apart from Cinnamon, CEPP has also been involved in the production of phytochemicals from members of the *zingiberace* (ginger) family, **Zingiber Zerumbet (lempoyang)** and **Curcuma Xanthorrhiza (temu lawak)**. Another IRPA funded project together with the Science faculty and industry collaborators was started in 2001 to develop process design to extract these two species. The active ingredients in Lempoyang and Temu Lawak are zerumbone, which has anti viral and potentially anti HIV properties, and xanthorrhizol, which has anti bacterial properties. The process design project involves process detailed design, scale up studies, total plant utilisation through biorefinery approach, and phytochemical purification. An example of the Turbo Extraction Distillation device and its applications is shown in Figure 6.

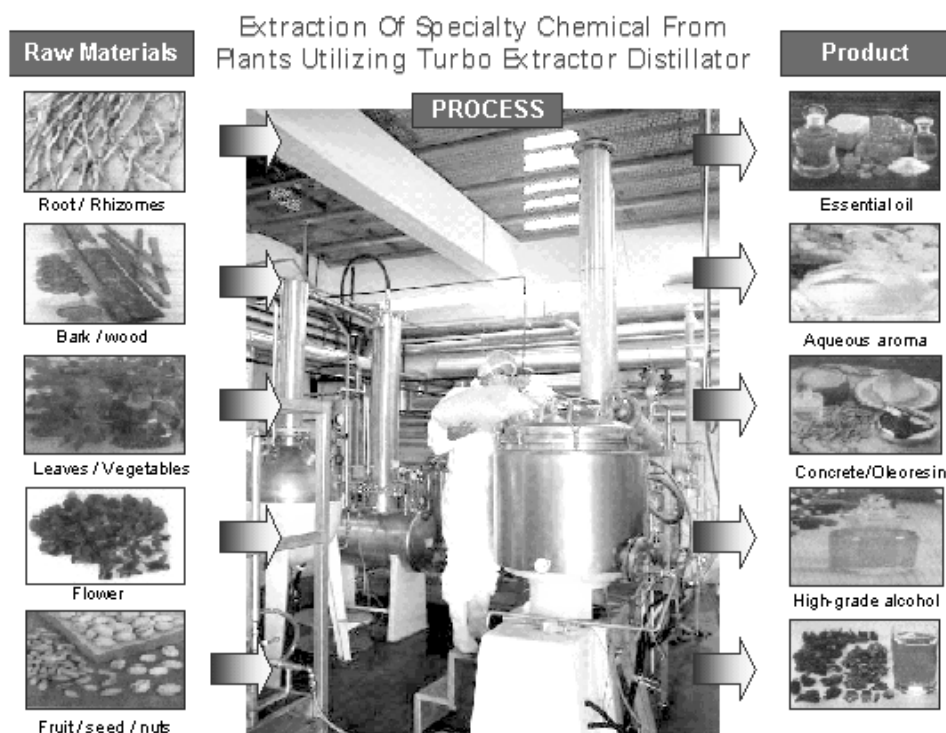


Figure 6: The Turbo Extractor Distiller and its Specialty Chemical Products



Another product from the ginger family developed at CEPP are the essential oils and oleo resins from the household ginger, *zingiber officinale* (**halia**). Ginger is freely available in Malaysia at a low price, therefore value added products can increase the value of this crop. In addition, many traditional cures in Malay, Indian, Chinese, and Indigenous groups are based on ginger. In collaboration with Universiti Malaysia Sabah, CEPP focused on the process design, process optimisation, and product commercialisation of essential oil and oleo resin production from ginger.

Besides IRPA funded projects, CEPP also focuses strongly on industry based development projects. A key and visible success process development at CEPP is the development of the Tongkat Ali water extract production process, which is currently utilised by Phytes Biotek Sdn Bhd and the Forest Research Institute of Malaysia (FRIM). Tongkat Ali extraction by Phytes Biotek previously had an extraction time of over 4 hours and low yield. After process development at CEPP, it was found that high pressure and temperature extraction increased the yield and reduced the extraction time to 2 hours. The process developed is shown in Figure 7 and Figure 8.

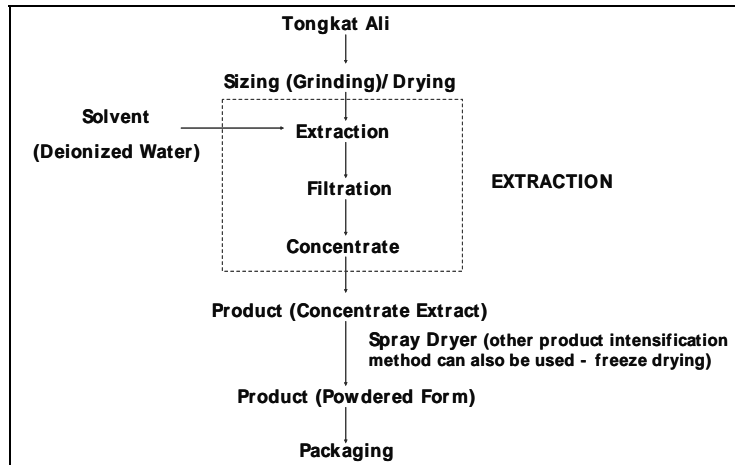


Figure 7: Tongkat Ali Process Flow Chart

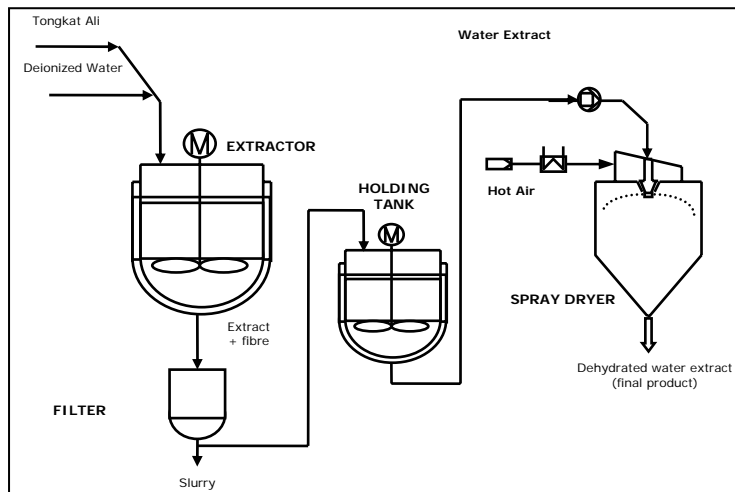


Figure 8: Tongkat Ali Water Extract Process Design

Apart from herbal extracts such as Tongkat Ali, CEPP has also developed aromatherapy products, as shown in Figure 9. CEPP has helped created several formulations in different forms such as lotions, sprays, and candles. A successful set of formulations are currently being marketed by Fyto-Elegance, another MAVCAP funded company.

CEPP has also done product formulations for spray dried Vitamin E from Palm Oil sources. The product formulation proved to be of high demand in countries such as Japan where in powder form it proved to be easily formulated and standardised.



Figure 9: Aromatherapy products developed at CEPP

Future work at CEPP

In essence CEPP intends to continue to pursue work focused on product and process development based on national natural resources through sustainable process technology.

A key area of focus will remain the Biorefinery approach where whole plant material is utilised to produce high value chemicals. In addition, as the health based industry is expected to continue growing at a high rate, more healthcare product and process development work will be pursued such as functional food additives. Lastly, as the knowledge base of the nation's human resources will be the driving force to the nations economic growth, CEPP will continue to develop more courses and trainings to serve the nations needs.

CONCLUSION

Phytochemical processing promises to be a lucrative industry for the future with a growth rate of 15 to 20 % of this almost USD100 billion business. Chemical Engineers are ideally suited to contributing to this industries growth with their process knowledge which can contribute to both process and product development based on the rich biological heritage of Malaysia.

Bibliography

Ahmed, R.S and Sharma, S.B. 1997. Biochemical studies on combined effects of garlic (*Allium sativum* Linn) and ginger (*Zingiber officinale* Rosc.) in albino rats. *Indian J. Experimental Biology*. 35: 841-843

Anderson, R.A and Schmidt, W.F. 2000. Cinnamon Extracts Boosts Insulin Sensitivity, *Agricultural Research Magazine*. July 2000

<http://www.ars.usda.gov/is/AR/archive/jul00/cinn0700.htm>

Arif, M.T. 2002. Keynote address: Traditional/Complimentary Medicine in the Malaysian Healthcare System. 4th International Conference for Traditional/Complimentary Medicine, Sunway Convention Centre, Kuala Lumpur, 14th October

CEPP short course notes, 'A Two and Half Day course of Herbal and Phytochemical Processing'

Harbourne, J.B. 1998. Phytochemical Methods. A guide to modern techniques of plant analysis. 3rd Ed. London: Chapman and Hall

Houghton, P. and Amala, R. 1998. Laboratory Handbook for the Fractionation of Natural Extracts. London: Chapman and Hall.

Gruenwald, J. and Hezberg, F. 2002. The Global Nutraceutical Market. Business Briefing: Innovative Food Ingredients

http://www.wmrc.com/businessbriefing/pdf/foodingredients_2002/publication/gruenwald.pdf

Ismail, F. Striving to be a major player. New Straits Times. March 11, 2003.

Jaganath, I.B, and Ng, L.T. 2000. The Green Pharmacy of Malaysia. Kuala Lumpur: MARDI

McGowan, M. 2000. Studying Medicinal Herbs. Conscious Choice. March 2000.

Merican, I. Use of Traditional Medicine on the rise. Star. March 15, 2003

Ministry of Agriculture. 1998. Third National Agricultural Policy (1998-2010)

Ministry of Health. 1999. National Policy on Traditional/Complimentary Medicine.

Rates, S.M.K. 2001. Plants as source of drugs. Toxicon, 39: 603-613

Schubert, M. 1998. Teaching Herbal Medicine. An Australian University Experience – Poster version. Medicinal Plant Conservation Conference, Bangalore, India, February 1998.

Shiva, V. The tumeric patent is the first step in stopping biopiracy. <http://www.twinside.org.sg/title/tur-cn.htm>

Shuler, M.L, and Kargi, F. 1992. Bioprocess Engineering: Basic Concepts. New Jersey: Prentice Hall
Sim B.H. Tongkat Ali and Kacip Fatimah top sellers in herbal industry. New Straits Times 26 May 2001

Sloan, A.E. 2002. The top 10 functional food trends: The next generation. Food Technology. 56:4 32-57

Tang, W. and Eisenbrand, G. 1992. Chinese drugs of plant origin. Chemistry, pharmacology, and use in traditional and modern medicine. Berlin: Springer Verlag